

## Structure of ristocetin A in complex with a bacterial cell-wall mimetic. Corrigendum.

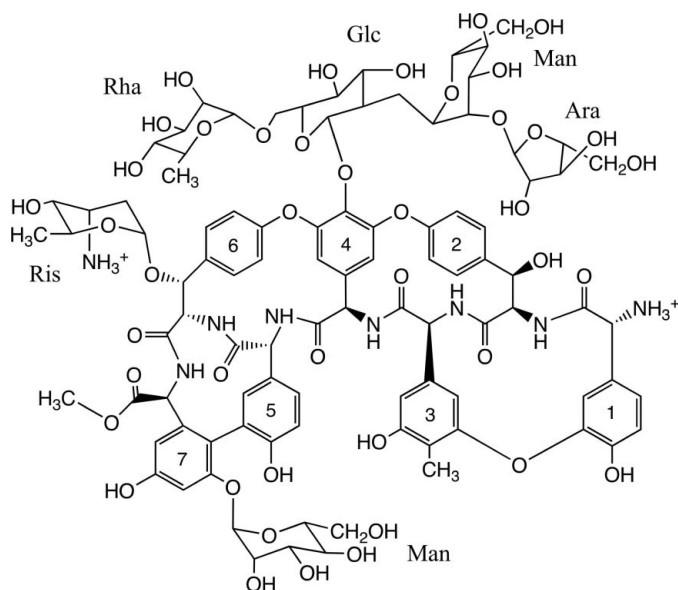
Virginie Nahoum, Sherri Spector and Patrick Loll\*

Department of Biochemistry and Molecular Biology, Drexel University College of Medicine, Philadelphia, PA 19102, USA

Correspondence e-mail: ploll@drexelmed.edu

Two errors in sugar stereochemistry in the structure of ristocetin A have been corrected and the structure has been re-refined.

For the ristocetin structure described in the article by Nahoum *et al.* (2009), a disordered arabinose sugar was incorrectly modelled in the pyranose form and an incorrect stereochemistry was used for the ristosamine sugar. These errors have been corrected and the structure has been re-refined, yielding  $R_{\text{cryst}}/R_{\text{free}}$  values of 0.166/0.189. A corrected version of Fig. 1 of the original article is given here (Fig. 1), reflecting the proper stereochemistry. The conclusions of the original paper are unaffected by these changes.



**Figure 1**  
The corrected structure of the class III antibiotic ristocetin.

### References

Nahoum, V., Spector, S. & Loll, P. J. (2009). *Acta Cryst.* **D65**, 832–838.